

ubu

HANS BELLMER: OCTOPUS TIME

January 24-April 11, 2009

1



Hans Bellmer

La Poupée (Torso) ["Torso/Doll's Center"], 1965

Painted aluminum on brass base
25 x 12 x 12 inches (63.5 x 30.7 x 30.5 cm)

Signature & number "2/8" engraved in red on base
(BELL 177)

2



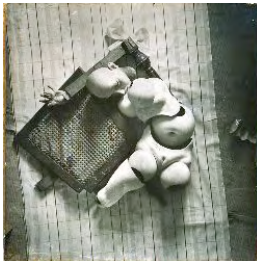
Hans Bellmer

La Poupée ["The Doll"], 1935

Hand-colored vintage gelatin silver print on original binder's board mount
9 3/4 x 9 3/4 x 7/8 inches (24.8 x 24.8 x 2.2 cm)

Signed on recto in red ink
(BELL 286)

3



Hans Bellmer

La Poupée (p. 43), 1935

Vintage gelatin silver print overpainted with white gouache & affixed to original mount
25 7/8 x 25 3/4 inches (65.8 x 65.5 cm)
Pencil notations in artist's hand on verso of mount
(BELL 8)

UBU GALLERY

416 EAST 59 STREET NEW YORK NY 10022 TEL: 212 753 4444 FAX: 212 753 4470 INFO@UBUGALLERY.COM WWW.UBUGALLERY.COM

4



Hans Bellmer

La Poupée, 1935 (printed 1938 or earlier)
Hand-colored vintage gelatin silver print
8 3/4 x 7 3/8 inches (22.3 x 18.7 cm)
(BELL 223)

5



Hans Bellmer

La Poupée (photo object), 1935 (printed 1949 or earlier)
Hand-colored cut-out vintage silver print
affixed to cut-off wine bottle cork
affixed to painted blackboard set inside
wood frame
9 x 6 1/2 inches (23.1 x 16.5 cm)
Signed in white paint on black backing
board
(BELL 19)

6



Hans Bellmer

Muse Cephalopod, 1939-1940
Gouache, pencil & watercolor on paper
15 3/4 x 19 1/4 inches (40 x 49 cm)
(BELL 181)

7



Hans Bellmer

Untitled (Father), 1960-61
Oil on canvas
25 x 25 inches (63.5 x 63.5 cm)
Signed on recto
(BELL 187)

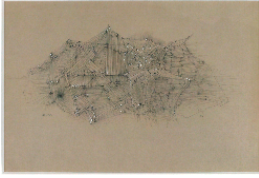
8



Hans Bellmer

Mains Articulées I, 1950
Oil & gouache on canvas
25 7/8 x 31 7/8 inches (66 x 81.25 cm)
(BELL 183)

9



Hans Bellmer

Untitled (Pelvis-Eyes-Ears), 1959

Pencil & white gouache on paper
13 x 19 5/16 inches (33 x 49.1 cm) -
sheet size

Signed on recto

(BELL 165)

10



Hans Bellmer

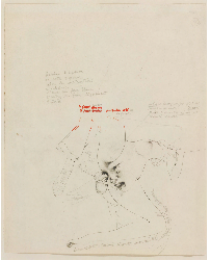
The Bed, ca. 1958

Pencil on paper
6 3/8 x 8 1/2 inches (16.2 x 21.6 cm)

Signed on recto

(BELL 173)

11



Hans Bellmer

Story of the Eye, 1946

Etching, red ink & pencil

12 x 9 5/8 inches (30.5 x 24.4 cm)

Signed & dedicated to Marcel Jean

(BELL 171)

12



Hans Bellmer

Couple, 1947

Pencil & white gouache on paper

10 x 8 1/2 inches (25.4 x 21.6 cm)

Signed & dated on recto

(BELL 395)

13



Hans Bellmer

Le Travail de la famille laborieuse

[*"The Hard Working Family at Work/A*

Hard Working Family is the Opium of the

People"], 1963

Pencil heightened with white gouache on

grey Ingres paper

25.59 x 16.54 inches (65 x 42 cm)

(BELL 188)

14



Hans Bellmer

In Memory, 1963

Oil, gouache & pencil on wood panel
39 3/8 x 39 3/8 inches (100 x 100 cm)

Signed on recto
(BELL 191)

15



Hans Bellmer

Nous la suivons à pas lents ["We Follow Her with Slow Steps"], 1937 (printed 1963 or earlier)

Hand-colored gelatin silver print on original masonite mount
58 1/4 x 39 3/8 inches (148 x 100 cm)

Signed on recto
(BELL 241)

16



Hans Bellmer

Untitled (Woman), 1942

Pencil on paper
10 1/4 x 7 3/8 inches (26 x 18.7 cm)

Signed on recto
(BELL 178)

17



Hans Bellmer

Unica (The Eye Vulva), 1963

Pencil & gouache on paper
Signed & dated in red on recto
(BELL 179)

18



Hans Bellmer

Vagina Eye (Eye-Vulva), 1963

Ink & gouache on paper
Signed on recto
(BELL 175)

19



Hans Bellmer

Untitled, 1938

Pencil & colored pencil on paper

10 5/8 x 8 1/4 inches (27 x 21 cm)

Name & address on recto in Bellmer's hand

(BELL 88)

20



Hans Bellmer

Femme et Divan, 1952

Gouache & ink

12 1/2 x 12 1/2 inches (31.75 x 31.75 cm)

Signed on recto

(BELL 184)

21



Hans Bellmer

La Poupée (p. 22, bottom left), 1934

Vintage gelatin silver print affixed to original mount

11 5/8 x 7 1/2 inches (29.5 x 19.1 cm)

Signed in pink ink on recto of mount

(BELL 150)

22



Hans Bellmer

La Poupée ["The Doll"], 1934

Vintage gelatin silver print affixed to original mount & stretcher

29 7/8 x 20 1/8 inches (75.9 x 51.1 cm)

Signed & dedicated to Elise "Lizica"

Codreano on recto / Signed & dated on verso

(BELL 285)

23



Hans Bellmer

La Poupée (p. 24, bottom right), 1934

Vintage gelatin silver print affixed to original mount

11 1/2 x 7 1/2 inches (29.2 x 19.1 cm) - image

Signed in pink ink on recto of mount /

Notations on verso of mount

(BELL 151)

24



Hans Bellmer

Marionnette (double-sided drawing), ca. 1969

Pencil, gouache & ink on paper
10 3/8 x 8 1/4 inches (26.4 x 21 cm)
Signed on recto
(BELL 166)

25



Hans Bellmer

Marionnette (Leures d'Amour), ca. 1969

Pencil, crayon & gouache on paper
11 7/8 x 8 7/8 inches (30.2 x 22.5 cm)
Signed on recto
(BELL 172)

26



Hans Bellmer

I Am You, 1963

Pencil & gouache on paper
25 5/8 x 19 5/8 inches (65.1 x 49.8 cm)
Signed in red on recto
(BELL 163)

27



Hans Bellmer

The Café, ca. 1960

Pencil & gouache on paper
16 1/2 x 11 3/4 inches (41.9 x 29.8 cm)
Signed on recto
(BELL 167)

28



Hans Bellmer

High Heels, 1961

Ink, gouache & crayon on paper
25 x 19 1/8 inches (63.5 x 48.6 cm)
Signed & dated on recto
(BELL 162)

29



Hans Bellmer

Untitled (Group of Cephalopods / Penetrations), 1945-1965

Pencil & ink on paper

25 x 18 inches (63.5 x 45.7 cm)

(BELL 176)

30



Hans Bellmer

Untitled, ca. 1934

White gouache on black paper

11 1/2 x 8 3/4 inches (29.2 x 22.2 cm)

Initialed in heart on recto

(BELL 273)

31



Hans Bellmer

Untitled, ca. 1934

White gouache on black paper affixed to black paper mount

12 7/8 x 9 3/4 inches (32.7 x 24.8 cm) - image

20 1/4 x 15 inches (51.4 x 38.1 cm) - mount

Signed & dedicated "pour Lizica Codreano" on recto of mount / Drawing on verso

(BELL 287)

32



Hans Bellmer

Pantalons sensuele, 1947

Pencil on graph paper

3 3/8 x 5 1/4 inches (8.6 x 13.3 cm)

(BELL 174)

33



Hans Bellmer

Untitled (study for "Mme. Edwarda"), 1955

Pencil on paper

7 1/4 x 3 1/4 inches (18.5 x 8.3 cm) - image

8 1/8 x 5 1/4 inches (20.8 x 13.4 cm) - sheet

Signed & dated on recto

(BELL 291)

34



Hans Bellmer

Study for "Madame Edwarda", 1955
Pencil on paper on original mount
8 1/4 x 4 1/8 inches (21 x 10.5 cm)
Signed on recto
(BELL 404)

35



Hans Bellmer

Untitled (Study for ninth etching in "Madame Edwarda"), ca. 1955 (etching realized 1955)
Pencil & gouache on paper
24 1/2 x 12 5/8 inches (62.2 x 32.1 cm)
by sight
Signed on recto
(BELL 67)

36



Hans Bellmer

Untitled (study for a print for Joyce Mansour's "Jules César"), 1955
Pencil on paper
8 1/8 x 4 inches (20.6 x 10.2 cm)
Signed & dated on recto
(BELL 406)

37



Hans Bellmer

Untitled (study for a print for Joyce Mansour's "Jules César"), 1955
Pencil on paper
5 3/4 x 2 5/8 inches (14.6 x 6.7 cm) -
image
7 1/2 x 4 1/4 inches (19.1 x 10.8 cm) -
sheet
Signed & dated on recto
(BELL 398)

38



Hans Bellmer

Education of a Young Girl, 1947
Pencil on graph paper
5 1/2 x 3 1/2 inches (14 x 8.9 cm)
Signed & dated on recto
(BELL 160)

39



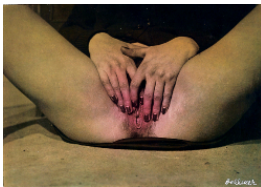
Hans Bellmer
Untitled, 1946
Vintage gelatin silver print
5 x 4 7/8 inches (12.7 x 12.4 cm)
(BELL 44)

40



Hans Bellmer
Studies for "L'Histoire de l'œil" ["The Story of the Eye"], 1946
Twelve (12) vintage gelatin silver prints
Each approximately 2 x 2 inches (5.1 x 5.1 cm)
(BELL 272)

41



Hans Bellmer
I Am God, 1946
Hand-colored vintage gelatin silver print
4 5/8 x 6 5/8 inches (12 x 17 cm)
Signed on recto
(BELL 182)

42



Hans Bellmer
Untitled (p. 107, variant), 1946
Vintage gelatin silver print
4 7/8 x 4 3/4 inches (12.4 x 12.1 cm) -
image
Blind stamped by artist's estate
(BELL 159)

43



Hans Bellmer
Untitled (study for "L'Histoire de l'œil" by Georges Bataille) (p. 106), 1946
Hand-colored vintage gelatin silver print
7 3/4 x 4 5/8 inches (19.9 x 11.8 cm)
Signed on recto in white ink
(BELL 240)

44



Hans Bellmer

La Poupée (maquette for "Les Jeux de la poupée"), 1935 (printed 1938 or earlier)

Hand-colored vintage gelatin silver contact print affixed to original mount
2 1/8 x 2 1/8 inches (5.4 x 5.4 cm) -
image
(BELL 52)

45

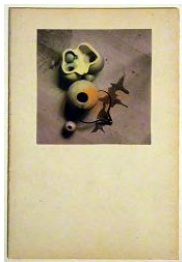


Hans Bellmer

La Poupée (maquette for "Les Jeux de la poupée"), 1934 (printed 1938 or earlier)

Hand-colored vintage gelatin silver contact print affixed to original mount
2 1/8 x 2 1/4 inches (5.4 x 5.5 cm) -
image
(BELL 49)

46



Hans Bellmer

La Poupée (p. 80), 1935 (printed 1938 or earlier)

Hand-colored vintage gelatin silver contact print affixed to original mount
2 1/8 x 2 1/8 inches (5.4 x 5.4 cm) -
image
(BELL 206)

47



Hans Bellmer

La Poupée (p. 93), 1935 (printed 1938 or earlier)

Hand-colored vintage gelatin silver contact print affixed to original mount
2 1/8 x 2 1/8 inches (5.4 x 5.4 cm) -
image
(BELL 217)

48

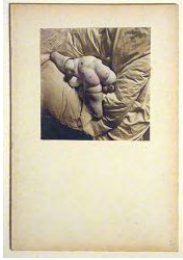


Hans Bellmer

La Poupée (p. 98, bottom), 1935 (printed 1938 or earlier)

Hand-colored vintage gelatin silver contact print affixed to original mount
2 1/8 x 2 1/8 inches (5.4 x 5.4 cm) -
image
(BELL 221)

49



Hans Bellmer

La Poupée (p. 94, b/w, top), 1935
(printed 1938 or earlier)
Hand-colored vintage gelatin silver
contact print affixed to original mount
2 1/8 x 2 1/8 inches (5.4 x 5.4 cm) -
image
(BELL 205)

50



Hans Bellmer

La Poupée (p. 97, top, variant), 1935
(printed 1938 or earlier)
Hand-colored vintage gelatin silver
contact print affixed to original mount
2 1/8 x 2 1/8 inches (5.4 x 5.4 cm) -
image
(BELL 202)

51



Hans Bellmer

La Poupée (p. 92), 1935 (printed 1938 or
earlier)
Hand-colored vintage gelatin silver
contact print affixed to original mount
2 1/4 x 2 1/8 inches (5.7 x 5.4 cm) -
image
(BELL 220)

52



Hans Bellmer

La Poupée (p. 84, bottom right), 1935
(printed 1938 or earlier)
Hand-colored vintage gelatin silver
contact print affixed to original mount
2 1/8 x 2 1/8 inches (5.4 x 5.4 cm) -
image
(BELL 204)

53



Hans Bellmer

La Poupée (p. 88, top), 1935 (printed
1938 or earlier)
Hand-colored vintage gelatin silver
contact print affixed to original mount
2 1/4 x 2 1/8 inches (5.7 x 5.4 cm) -
image
(BELL 203)

54



Hans Bellmer

La Poupée (p. 89), 1935 (printed 1938 or earlier)

Hand-colored vintage gelatin silver contact print affixed to original mount
2 1/4 x 2 1/4 inches (5.7 x 5.7 cm) -
image
(BELL 218)

55



Hans Bellmer

La Poupée (p. 82, bottom left), 1935 (printed 1938 or earlier)

Hand-colored vintage gelatin silver contact print affixed to original mount
2 1/8 x 2 1/8 inches (5.4 x 5.4 cm) -
image
(BELL 222)

56



Hans Bellmer

La Poupée (p. 86), 1935 (printed 1938 or earlier)

Hand-colored vintage gelatin silver contact print affixed to original mount
2 1/8 x 2 1/8 inches (5.4 x 5.4 cm) -
image
(BELL 216)

57



Hans Bellmer

La Poupée (p. 90, bottom), 1935 (printed 1938 or earlier)

Hand-colored vintage gelatin silver contact print affixed to original mount
2 1/8 x 2 1/8 inches (5.4 x 5.4 cm) -
image
(BELL 215)

58



Hans Bellmer

La Mitrailleuse en état de grâce ["*The Machine Gunneress in a State of Grace*"], 1937

Hand-colored vintage gelatin silver print highlighted with white gouache (affixed to contemporary archival mount)
26 x 26 inches (66 x 66 cm)
(BELL 47)

59

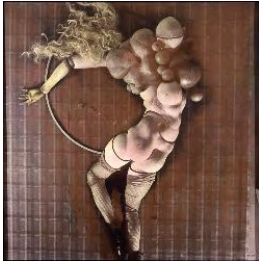


Hans Bellmer

La Poupée, 1935

Vintage gelatin silver print affixed to mount & taped to original stretcher
26 x 26 inches (66 x 66 cm)
Signed on recto in green gouache
(BELL 27)

60

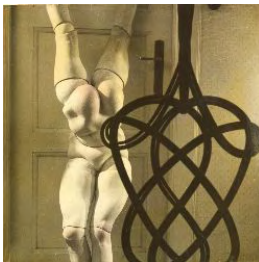


Hans Bellmer

La Poupée, 1935

Hand-colored vintage gelatin silver print
affixed to original mount & stretcher
26 x 26 inches (66 x 66 cm)
Signed in black gouache on recto
(BELL 11)

61



Hans Bellmer

La Poupée, 1935 (printed 1938 or earlier)

Hand-colored vintage gelatin silver print
affixed to contemporary archival mount
16 3/8 x 16 1/2 inches (41.7 x 41.9 cm)
(BELL 34)

ubu

HANS BELLMER: OCTOPUS TIME

January 24-April 11, 2009

Display Case

1



Hans Bellmer

La Poupée 2 (original binding conceived by Georges Hugnet and executed by Louis Christy), 1936

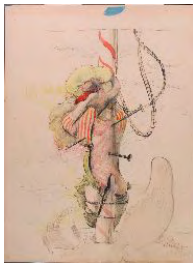
Maquette with (23) twenty-three original photographs

4 7/8 x 4 x 1 7/8 inches (12.4 x 10.2 x 4.8 cm)

Dedicated to Georges Hugnet & dated "1937" on title page
(BELL 394)

Location: Display case, left

2



Hans Bellmer

Untitled, ca. 1934

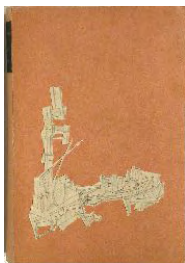
Ink & watercolor on paper

12 5/8 x 9 3/8 inches (32 x 23.9 cm)

(BELL 282)

Location: Display case, left

3



Hans Bellmer

Carnets de Croquis ["Sketchbooks"], 1936-38

Eight (8) sketchbooks with approximately 220 drawings in pencil & watercolor, enclosed in the original wrapper
6 1/4 x 4 1/2 inches (15.9 x 11.4 cm) - approx.

Signed & titled on wrapper / Dated on six (6) of the sketchbook covers & signed on two (2)

(BELL 180)

Location: Display case, left

UBU GALLERY

416 EAST 59 STREET NEW YORK NY 10022 TEL: 212 753 4444 FAX: 212 753 4470 INFO@UBUGALLERY.COM WWW.UBUGALLERY.COM

4



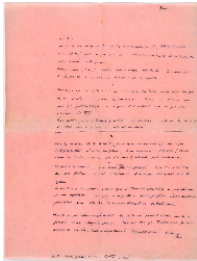
Hans Bellmer
Untitled (Group of nine letters addressed to Ursula Naguschewski & Marie Spaeth-Bellmer, & one notebook with writing titled "Kapital III" & drawings of Charlie Chaplain)
Ephemera
Various sizes
(BELL 340.01)
Location: Display case, left

5



Hans Bellmer
Untitled (photograph of Hans Bellmer at age "5 3/4" & his brother at 3 months), ca. 1908
Vintage gelatin silver print
7 7/8 x 5 3/4 inches (20 x 14.6 cm)
(BELL 340.02)
Location: Display case, left

6



Hans Bellmer
Letter to "J.B."
Handwritten letter in blue ink on pink tracing paper
(BELL 272.14)
Location: Display case, left

7



Hans Bellmer
La Poupée, 1935
Vintage gelatin silver print
4 3/8 x 4 3/8 inches (11.2 x 11.2 cm) - image
Blind stamp applied by the artist's estate
(BELL 16)
Location: Display case, right

8



Hans Bellmer
Perruque de la poupée ["Wig"], 1935
Feathers & satin
4 3/4 inches (12 cm) diameter
(BELL 235)
Location: Display case, right

9



Hans Bellmer

Untitled (Unica Zürn holding a painting of herself by Hans Bellmer)

Vintage gelatin silver print
3 3/4 x 5 1/4 inches (9.5 x 13.3 cm)
(BELL 340.03)

Location: Display case, right

10



Hans Bellmer

Untitled (group of ten photographs)

Vintage gelatin silver prints
approximately 3 1/4 x 5 1/4 inches (8.3 x 13.3 cm) each
(BELL 340.04)

Location: Display case, right

11



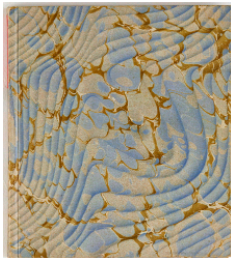
Hans Bellmer

Untitled (group of manuscripts)

One (1) notebook of 17 pages, one (1) loose page, & one (1) small notebook in French with drawings on the back page
(BELL 405)

Location: Display case, right

12



Hans Bellmer

Die Puppe, Th. Eckstein, Karlsruhe, 1934

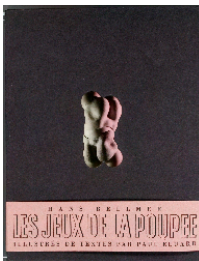
Paperbound book with faux marbled cover containing ten (10) photographs

4 3/4 x 4 1/4 inches (12.1 x 10.8 cm)

Signed in pencil on dedication page
(BELL 399)

Location: Display case, right

13



Hans Bellmer

Les Jeux de la poupée, Paris, Les Editions premières, 1949

Hardbound volume with fifteen (15) tipped-in, hand-colored vintage gelatin silver prints & text by Paul Éluard.

9 3/4 x 7 3/4 inches (25 x 19.5 cm)

Ed. 112/136

Signed on colophon
(BELL 289)

Location: Display case, right

14



Hans Bellmer

La Poupée (Edition G.L.M., Paris) , 1936
Paperbound volume with ten (10) tipped-in vintage gelatin silver prints
6 1/2 x 5 inches (16.5 x 12.7 cm) - book 79/100

(BELL 53)

Location: Display case, right

15



Hans Bellmer

Petite anatomie de l'inconscient physique ou L'Anatomie de l'image , Le Terrain Vague, Paris, 1957

Deluxe edition on Rives with ten (10) illustrations & an original drawing & original etching by Bellmer

11 x 8 7/8 inches (28 x 22.7 cm)

Drawing & etching signed by Bellmer

(BELL 274)

Location: Display case, right

16



Hans Bellmer

Messages - Metaphysique et Poésie, Vol. 1 "Jeux vagues, La poupée", Paris, Editions de la revue Messages, cahier II. 1939

Paperbound periodical

10 5/8 x 7 3/8 inches (27 x 18.7 cm)

(BELL 237)

Location: Display case, right

17



Hans Bellmer

Hommage à Hans Bellmer, 1975-1976

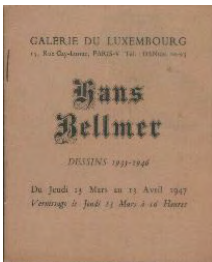
Catalogue with tipped in vintage gelatin silver print of "La Bouche," 1936

9 3/4 x 8 1/4 inches (24.8 x 21 cm)

(BELL 37)

Location: Display case, right

18



Hans Bellmer

Dessins 1935-1946, Paris, Galerie du Luxembourg, 1947

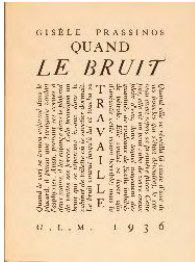
Paperbound exhibition catalogue

5 1/4 x 4 1/4 inches (13.3 x 10.8 cm)

(BELL 236)

Location: Display case, right

19



Hans Bellmer
Quand le bruit travaille , Editions G.L.
M., Paris ,1936
Paperbound volume with original
photograph by Bellmer & text by Gisèle
Passinos
6 5/8 x 4 7/8 inches (16.8 x 12.4 cm)
8/10/2006
Dedicated to André Breton by the author
(BELL 275)
Location: Display case, right